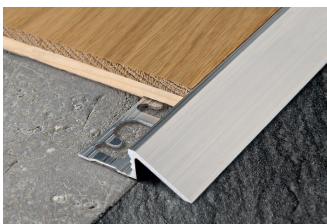




PROSLIDER is a sloping terminal transition profile designed to join different height floors in a perfect, stepless way. This particularly sturdy profile withstands and supports high loads and frequent passage of manual trolleys and vehicles in addition to protecting the edge of the higher floor. **PROSLIDER** is used in particular to join tile or wood to an existing floor.
Available in natural and anodised silver aluminium in various heights to accommodate all differences in level.

PROSLIDER

NATURAL ALUMINIUM AND ANODISED SILVER ALUMINIUM



NATURAL ALUMINIUM thermo packed 5 Pcs
bar length 2,7 lm - pack 40 Pcs - 108 MLX

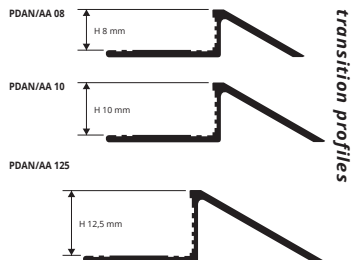
Article	H mm
PDAN 08	8
PDAN 10	10
PDAN 125	12,5

COLOURS



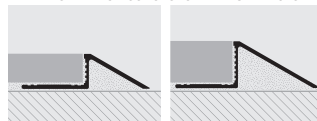
ANODISED SILVER ALUMINIUM thermo packed
bar length 2,7 lm - pack 40 Pcs - 108 lm

Article	H mm
PDAA 08	8
PDAA 10	10
PDAA 125	12,5



transition profiles

EXAMPLES AND INSTRUCTIONS FOR LAYING METHODS



1. Choose the profile with the required height H, material and finish.
2. Fill the profile cavity with adhesive and apply the adhesive onto the area of application.
3. Lay the "PROSLIDER".
4. Align it "flush" with the floor/covering.
5. Use the adhesive to seal any empty interstices.

PROSLIDER LR is a sloping terminal transition profile designed to join different height floors in a perfect, stepless way. This particularly sturdy profile withstands and supports high loads and frequent passage of manual trolleys and vehicles in addition to protecting the edge of the higher floor. **PROSLIDER LR** is used in particular to join tile or wood to an existing floor.
Available in natural and anodised silver aluminium in various heights to accommodate all differences in level.

PROSLIDER LR

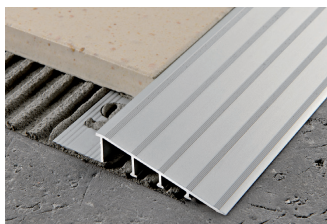
NATURAL ALUMINIUM AND ANODISED SILVER ALUMINIUM



NATURAL ALUMINIUM thermo packed 5 Pcs
bar length 2,7 lm - pack 20 Pcs - 54 lm

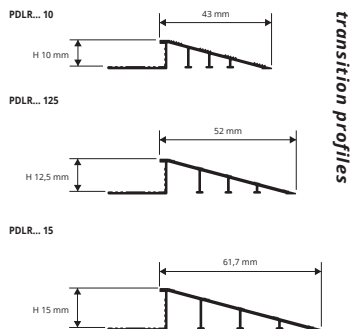
Article	H mm
PDLRAN 10	10
PDLRAN 125	12,5
PDLRAN 15	15

COLOURS



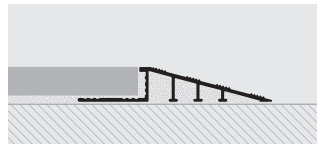
ANODISED SILVER ALUMINIUM thermo packed
bar length 2,7 lm - pack 20 Pcs - 54 lm

Article	H mm
PDLRAA 10	10
PDLRAA 125	12,5
PDLRAA 15	15



transition profiles

EXAMPLES OF LAYING



INSTRUCTIONS FOR LAYING

1. Choose the profile with the required height H, material and finish.
2. Fill the profile cavity with adhesive and apply the adhesive onto the area of application.
3. Lay the "PROSLIDER LR".
4. Align it "flush" with the floor/covering.
5. Use the adhesive to seal any empty interstices.